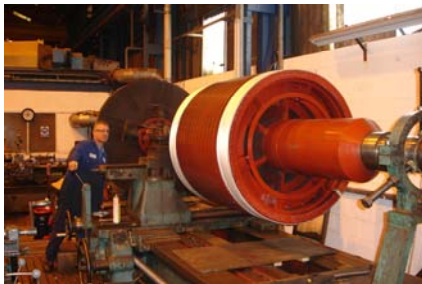


Electro Mechanical Division

Bowers Electricals Ltd undertakes many Electro mechanical repairs which complement our manufacturing, repair & rewind facilities. We have substantial machine shops which can produce most mechanical components utilising our experienced mechanical engineering team.

Machining & Balancing



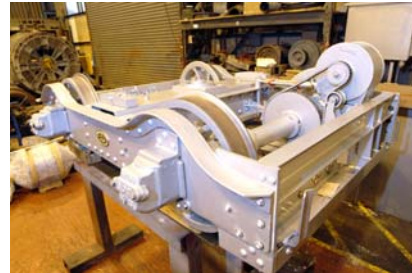
We have fully equipped Machine shop facilities available for all types of machining, milling, welding, radial drilling, metal spraying & balancing. This section also has one of the largest centre lathes available within the industry allowing machining of large armatures, shafts and rotors. Re-keying and re-shafting of rotors are carried out on a routine basis, along with specialist motor

repairs and motor part manufacture. This division also manufactures many component parts required by our Transformer & Switchgear divisions.



Traction

Bowers Electricals Ltd are the vehicle and infrastructure engineers to the Great Orme Tramway at Llandudno and have re-engineered and manufactured new pulleys and rollers for the haulage rope system. Repairs, overhaul and remanufacture are carried out to all types of bogies, Traction motors & Transformers including re-tyring of traction wheels and pressing facilities up to 50 tons. Bowers have developed a close liaison with the Heritage Rail Organisation and also have maintenance contracts looking after Power assets within the Traction manufacturing industry.



Gear boxes, pumps and fans and associated equipment

We offer full service and overhaul, both in-house and on site for repair and service of Gear boxes, pumps and fans and associated equipment including installation.

Fabrication

Our fabrication facilities include production of all types of Power & distribution Transformer tanks, Substation base frames, oil disconnection & bus bar chambers, Containerised substation modification and LV switchboard enclosure for both inside & outdoor use.